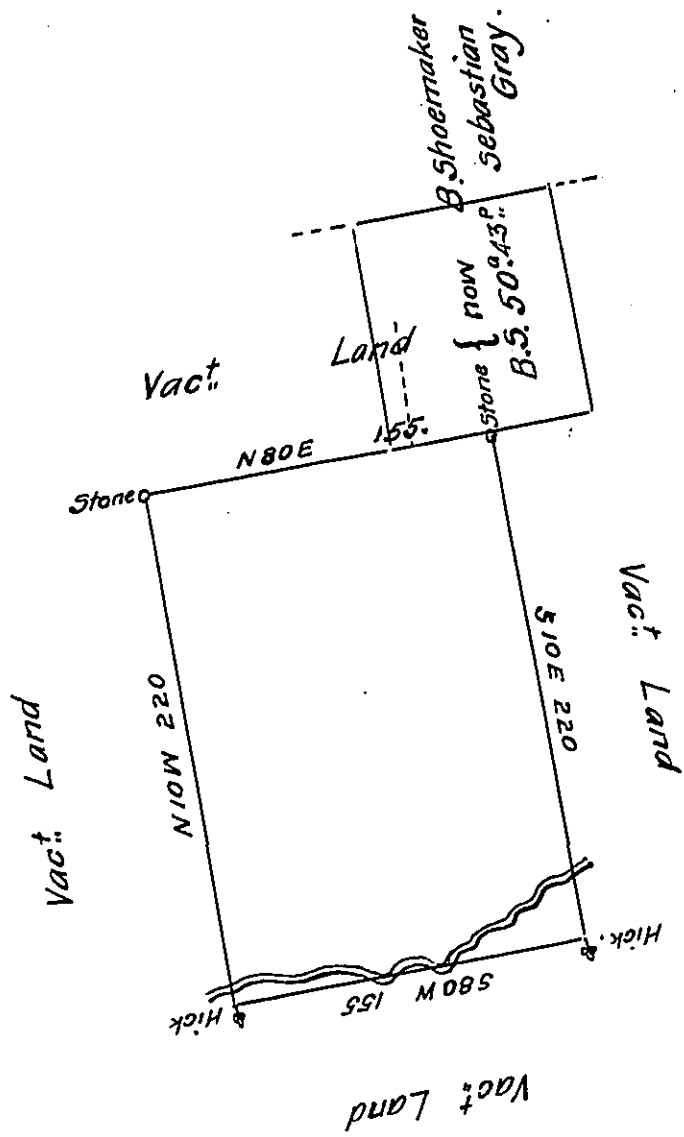


FORM No. 1.



By Vertue of a Warrant from the Proprietaries Dated the Sixteenth day of August 1738 Surveyed the Twenty first day of August 1738 To Frederick Leybey the above Described Tract of Land Situate on a Branch of Manahatawny in the County of Philad^a Containing Two hundred & one Acres with allowance of Six $\frac{1}{2}$ Cent. ~

Edw^d Scull.

Assigned to Benja. Shoemaker of Philad^a

IN TESTIMONY that the above is a copy of the original remaining on file in the Department of Internal Affairs of Pennsylvania, made conformably to an Act of Assembly approved the 16th day of February, 1833, I have hereunto set my Hand and caused the Seal of said Department to be affixed at Harrisburg, this twenty-seventh day of April 1909.

Henry Howell
Secretary of Internal Affairs.

Handwritten note at the bottom of the page, partially illegible.